

PALOS VERDES ART CENTER

artifacts



WINTER 2010



ON TIME: NY TO LA

"SCARLET MACAWS"
(DETAIL) BY RALPH
MASSEY, ACRYLIC AND
GOUACHE, 23 X
43 INCHES

Looking at the 1950s New York School provides a way to understand "temporality" in contemporary West Coast art. See Page 7.

Chief Executive Officer's Column



The Value of Exhibitions

-BY BOB YASSIN

Fall was extremely busy here at the Art Center with classes, programs and exhibitions. As our hardworking president Allen Lay details in his column, work is also moving forward vigorously on our redevelopment plans. We all look forward to seeing this program through to completion and the positive results in a New and aesthetically improved Palos Verdes Art Center and one that will better serve our ever-growing needs. As you can see from the information in this *Artifacts*, the months ahead will be very busy as well.

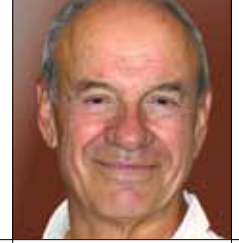
Since our founding almost 79 years ago, exhibitions have been and continue to be a major part of our programming at the Art Center. Bringing high quality and varied exhibitions to the Peninsula remains a major activity. Our fall *Juried All-Media*, *Small Treasures*, *Off the Wall* and *Photography* exhibitions, filled with excellent work by many talented artists, continued this great tradition. The upcoming *Art on a String* exhibition will fill the Beckstrand and Walker galleries with a unique collection of historic and contemporary kites from around the world. In the Norris Gallery, the exhibition *On Time: NY to LA* will make connections between contemporary developments in painting on the East Coast with those in Southern California. We are very pleased to bring these are two enjoyable and very educational exhibitions to Palos Verdes. Details about these shows can be found on pages 6 and 7.

In addition to providing the general public with the opportunity to view good art, exhibitions also provide the same and very important opportunity to students of all ages in our classes to learn by seeing other artists' work. Likewise, shows such as the *Juried All-Media*, *Small Treasures* and *PVAC Artists Holiday Art Exhibition* provide artists in our area showcases to exhibit their work in an institutional context. I hope you will all come see these exhibitions. I know you will enjoy your visit.

Our Annual Fund appeal continues as I write this message. I want to thank all of you who have made a much-needed contribution to this campaign for your support, and to urge all of you who have not to do so and as generously as you can.

Finally, I close by sending my very best wishes to you for the Holiday Season and for the New Year, a year that promises to be a very exciting one for the Palos Verdes Art Center.

President's Column



Keep Your Powder Dry

-BY ALLEN LAY

When I became president a year ago this past July my predecessor (now chairman) Don Crocker said to me: "Allen, we will remodel the Art Center on your watch, congratulations." Here I am, five months into my second term and we have yet to put a spade in the ground. This, of course, is a cause for disappointment. On the other hand, we have made a lot of progress and I think we can see the light at the end of the design and planning tunnel, and during the process a lot of improvements in our plans have taken place.

As previously reported, we have the basic approvals from the city to proceed. Most of the detail working drawings are complete and have been through plan check. There are open questions however. The final design details of the patio, the kitchen, the lighting design, the landscaping and the details of the metal cladding of the building remain to be completed. Each of these alone would not preclude us from starting to build but when taken as a whole opens questions that could impede a smooth construction process.

The Building Committee has recommended and the Board of Trustees has approved the completion of the design details enumerated above before we go to final bid and begin construction. Some elements of these final details may require us to again seek city approval. In arriving at this decision, the Board also clearly defined the priorities of the improvements that the redevelopment of the facility should provide. They are:

- Addition of 1,600 square feet of storage space.
- Expansion of the patio with freestanding, all-weather covering to eliminate internal roof support structures and to provide heating and cooling capability.
- New main entrance and metal cladding of the building to bring the facility into the 21st century.
- Addition of decking around the Beckstrand Gallery to improve storage.
- Addition of covered decking behind the Ceramics Studio.
- Addition of the structure to house the new Glass Studio.
- New kitchen layout and improvements to the galleries.

The decision to complete the design in detail before going to bid means an additional five or six months of design work which, when completed, will allow a very detailed bid package and in the long run a lower construction cost.

CHOOSE YOUR OWN PALOS VERDES DREAM HOUSE!



Imagine! Choose Your Own Dream House in the Palos Verdes Peninsula, Torrance, San Pedro or Beach Cities!

Does it have a swimming pool? An ocean view? Five bedrooms, or just two luxurious ones? Mediterranean, or modern? Old-fashioned charm, or all the latest conveniences? Cook's kitchen? Whatever. If the ticket thresholds are reached, our Grand Prize winner can shop for the house of his or her personal dreams for us to purchase as the 2010 Palos Verdes Dream House! Or, if your dream is a trip around the world, take the alternative \$1,000,000 cash prize and make that happen!

2 3

artifacts

"We've come to realize that each person's Dream House is different. What fulfills my dream won't be what's perfect for you," said Robert A. Yassin, executive director. "This way the winner can find a personal ideal place, whether it is a large home for a growing family or a luxurious retreat for an empty-nester. And, by including most of the South Bay in the purchase area, a person with roots in one community won't need to move to claim the Dream House."

This is the eighth year for the Art Center's Win Your Dream House Raffle and **it's bigger than ever, with four early birds, five multiple ticket drawings and the option of choosing your own dream home.**

If 24,000 tickets are sold (at \$150.00 each), the Grand Prize winner can shop for the \$1,500,000 house of his or her dreams for the Art Center to buy. Or, if 22,000 tickets are sold, the winner can choose a \$1,200,000 Dream House. (*The house must appraise for at least the prize value. No cash refund if a house of lesser value is chosen.*) In either case, the winner also has the option of the \$1,000,000 cash prize.

The \$1,000,000 alternative cash prize (with no Dream House option) is available at 20,000 tickets. If fewer tickets are sold, the winner will receive 50% of the net proceeds, up to a maximum of \$1,000,000.

In its first seven house raffles, the Palos Verdes Art Center gave away over \$9,900,000 in cash and prizes to the holders of more than 1,500 winning tickets.

This year, **the Grand Prize drawing will be held at the Art Center at 5:30 p.m. Tuesday, April 27, 2010.** The ticket purchase deadline is 4 p.m. Saturday, April 24. **Early Bird drawings will be held at 5:30 p.m. Tuesdays, December 22, January 26, February 23 and March 23.** The deadline for each Early Bird is 4 p.m. the prior Saturday (December 19, January 23, February 20 and March 20).

At each drawing, purchasers of two or more tickets will also be entered in a special multiple ticket drawing. These prizes are \$5,000 at each Early Bird and \$25,000 at the Grand Prize drawing. To be eligible, tickets must be purchased

Ticket order forms, complete rules and further information about the Choose Your Dream House raffle can be found at the Palos Verdes Art Center's website: www.pvart-center.org or call 310-541-2035 to have the complete rules mailed to you.

Tickets can be purchased with check, money order or credit card (MasterCard or Visa) at the Art Center from 9 a.m.–5 p.m. Mondays through Fridays, 10 a.m.–4 p.m. Saturdays or 1–4 p.m. Sundays, or with credit card by calling 310-541-2035 during those hours. Orders can be faxed to 310-541-0248 or 310-541-4370 or mailed to the Art Center, 5504 W. Crestridge Rd., Rancho Palos Verdes, CA 90275.

at the same time in the same name(s). Tickets won as prizes are not eligible.

In all, \$300,000 in cash and tickets will be awarded in Early Bird and Multiple Ticket drawings. Winners need not be present to win (except for attendance prizes).

California's FIRST AND BEST House Raffle!

exhibiti

NOTE: The galleries will be closed on Christmas and New Year's Day.

BECKSTRAND AND WALKER GALLERIES

Surf and Turf

Seascapes and landscapes—but not classic images of waves crashing ashore by an iconic lighthouse nor beautiful meadows at the foot of majestic mountains—are the subjects of *Surf and Turf*, featuring the work of area artists Denice Bartels, Raoul De la Sota, Daniel du Plessis, Connie Jenkins, Todd Kenyon and Constance Mallinson.

“I was inspired by the impression of the ocean, its vastness, strength and quiet somberness. I was impressed by the massive land and the different plants and creatures that live both on the land and in the ocean,” said curator Scott Canty.

The graphite, charcoal and pastel drawings of Denice Bartels capture patterns of reflected light on water. “Using standard methods and media, these formal drawings challenged me to stretch how well I see, capture the translucence of water and depict its movement,” she said.

Raoul De la Sota sees his landscapes as being about “the sacredness of the earth...(providing) a link to the past, a path to the source.” Drawing on his Mexican heritage, he describes his work as portraits of his own experience or the interconnection of the land with its ancient people.

“Nature imagery is my point of departure in creating imaginary, psychological environments. Animals, bird, insects and reptiles coexist with romantic symbols such as flowers and hearts. My themes include romantic love, the transience of things and the passage of time,” said Daniel du Plessis of his oil paintings.

The paintings by Connie Jenkins reflect her participation in an exhibition marking the 25th anniversary of Channel Islands National Park, which gave her access to normally restricted areas. “The places in my paintings exist in spite of our



“FOURSECOND” (DIPTYCH) BY TODD KENYON



“UNTITLED 71” BY DENICE BARTELS



“AD ARCADIA” BY CONSTANCE MALLINSON

careless disregard. Fragile and impervious, enduring and threatened, gaudy and subtle, disappearing and recovering, these waters are a template of our own existence. These places survive with the duality of desires—to consume and to preserve,” she said.

Todd Kenyon calls his oil painting style “contemporary realistic,” depicting his personal experiences of surf meeting sand in tranquil solitary spots.

Constance Mallinson creates epic-scaled, panoramic oil landscapes with a unique painted “collage” technique, combining landscape imagery into dizzying montages juxtaposing multiple views, perspectives, time frames and narrative.

(RIGHT) “EVERYBODY KNOWS” BY DANIEL DU PLESSIS



“MY GRAND-MOTHER’S SKY” BY RAOUL DE LA SOTA



“PINK ALGAE” BY CONNIE JENKINS



“HARA COUNTRY ARK” BY JOHN KAYTOR, ACRYLIC ON CANVAS

“SENTINEL” BY PAT COX, MIXED-MEDIA SCULPTURE



NORRIS GALLERY

PVAC Artists Holiday Art Exhibition

John Kaytor and Pat Cox took top honors in the 2009 PVAC Artists Holiday Art Exhibition.

Cox won in the three-dimensional division with *Sentinel*, a mixed media sculpture. Kaytor took first for two-dimensional work with *Hard Country Ark*, an acrylic painting.

Additional two-dimensional winners were: second place, *Ocean Intersect*, an oil painting by Karen Wickham; third, *Amaryllis Bouquet*, an oil painting by Heather Escalante, and honorable mentions, *Vine*, *The Getty*, a digital photograph by John Stewart, and *Koi Series #1*, a watercolor by Trish McCoy.

Also winning in the three-dimensional division were: second place, *Bound*, a ceramic sculpture by Barbara St. John; third, *Yellow Maquette*, a wood and acrylic sculpture by David Mac Innes, and honorable mentions, *Powell the Puzzled*, a ceramic sculpture by M.C. Armstrong, and *My Life So Far*, an artist’s book by Anne Wittels.

Annette Drew Owens’s collagraph *Primordial Metamorphosis* received the Cynthia Schrier Award; Lyn-Rae Ashley’s burnished porcelain box *Arctic Wave*, the Gwen Sandvick Award, and Dawn Quinones’s mixed media painting *Jubilation*, the Ruth Eyrich Award.

Artist Raoul De la Sota, whose work is part of *Surf and Turf*, juried the exhibition and selected the winners. All entries were from members of the Palos Verdes Art Center’s eight affiliated artists’ groups.

exhibiti

BECKSTRAND AND WALKER GALLERIES

Art on a String

Historic and contemporary kites from around the world will swoop and soar through the Beckstrand and Walker Galleries, brightening the dull days of winter with colorful silk and paper banners and tails.

Images of kites appear in ancient Egyptian hieroglyphs, although generally China is cited as the birthplace of kites, according to Will Yolen, founder of the International Kite Fliers Association. Silk and bamboo kites appeared there about 2800 years ago as designers applied observations of soaring birds to kite design and cambered the kite wings to make airfoils. This tradition contrasts to that of Europeans who tried to simulate the movement of wings in their first attempts to emulate flight.

Kites became popular throughout Asia for religious ceremonies, celebrations, signaling, communications, measuring distances, carrying noisemakers to frighten enemy troops, testing the wind and even lifting men and supplies.

Kites in Japan are associated with festivals, holidays and special occasions. Shinto and Buddhist priests gave parents of first-born sons kites emblazoned with pictures of folk heroes or gods to give the child strength and vigor. Kintaro or Golden Boy was a popular character, often shown with a carp, the strong fish that fights its way upstream.

Kite fighting became part of numerous cultures. The goal is to crash the opponent's kite by cutting his flying line. Not regarded as "kid's stuff," organized kite fights attract thousands of people.

In Europe, drawings of kites appeared in the Netherlands and England in the 17th century. And, in 1750, Benjamin Franklin proposed testing whether lightning was electricity by flying a kite carrying an iron key into a storm.

Today's kites, ranging from simple children's toys to sophisticated flyers with multiple control wires, come in many shapes and sizes but still basically consist of paper or fabric sails attached to lightweight spars. Tails help keep the kite's nose facing into the wind.



NORRIS GALLERY

On Time: NY to LA

Following World War II, the New York School, a largely male group of American abstract expressionists including Jackson Pollock, Willem de Kooning, Mark Rothko and later Agnes Martin, shifted the focus of the Western art world from Paris to New York. *On Time: NY to LA* uses this movement to understand the use of “temporality” in contemporary West Coast art.

Curated by Maddie Phinney, an independent curator with a degree in art history from Smith College, the exhibition compares the work of current local artists with their abstract expressionist forebears. For example, she writes, “Tera Galanti’s *16401-482* evokes the drips and spills of a Jackson Pollock painting while extending the picture plane into the space of the gallery, encouraging viewers to imagine themselves mingling among the colorfully rich stalactites that appear to float mid-air. Galanti challenges the immediacy of action painting with the languid dream-like quality of *16401-482*, a work absorbed by viewers as they move around the gallery through time.”

Similarly, Phinney compares Michael Rohde’s richly woven tapestries to “the expressive flatness of paintings by Mark Rothko with his blocks of rich color.”

“The ethereal works of Linda Jo Russell channel the grid-like meditative quality of an Agnes Martin drawing,” she wrote. “Both artists are fascinated by the delicate power of the line: a fixed unit of measurement existing as an unyielding record of time.”

Ralph Massey’s irreverent paintings employ “iconic images from the New York School and beyond, referencing Cy Twombly, de Kooning and others,” she continued.

“In 1950s New York, the abstract expressionist movement focused on the production of a work and the physical expression of the artist. In this way, expres-



“16401-482” BY TERA GALANTI



“WATER” BY LINDA JO RUSSELL



“RADIATOR BUILDING GRID” BY MICHAEL ROHDE



“UNTITLED BLUE” BY TERA GALANTI

sionism is more about the record of expression than the expression itself. *On Time: NY to LA* brings us back to contemporary Los Angeles and, in doing so, encourages the viewer to examine these iconic works as markers of time in an attempt to better understand the contemporary practices of Galanti, Massey, Russell and Rohde.”

A grand kick-off to th

The Palos Verdes Art Center kicked off the holiday season with a festive party on Friday, November 15, 2008. The event featured a Holiday Art Mart—the newest incarnation of Art for Fun(d)s Sake—and the opening reception for S



There was gorgeous art on the gallery walls, music, and a check presentation.

Art Center artists offered a unique holiday shopping opportunity with bargains galore.



e holidays

er 20. It was the first day of the second annual weekend
Turf and Turf and the *PVAC Artists Holiday Art Exhibition*.



Excellent refreshments and libations were provided by The Circle.



8 9

artifacts



A fine time was had by all.

Applications for
ALPAY AWARDS
Now Available

Applications for the 2010 Beverly G. Alpay Memorial Awards in the Visual Arts are now available. Completed applications are due Friday, February 26.

Intended to encourage visual arts students and professionals, Alpay Awards focus on traditional fine arts, such as painting, sculpture, printmaking, ceramics, photography and illustration. Not included are film, video or performance art, art history or art education. Emphasizing artistic excellence, the program has awarded a total of \$112,070 plus numerous Art Center classes during its 12 years. In all, 95 students and artists have received awards.

Maximum awards are \$3,000 for MFA students and \$2,500 for both current college undergraduates in the visual arts and 2010 high school graduates planning on majoring in the field. Awards of up to \$2,000 each are available to assist working artists

and of up to \$500 for art supplies and classes for children and youth (through high school juniors).

The selection committee annually determines the number, type and value of awards in each category based on the quality of the applications.

The Beverly G. Alpay Memorial Education Endowment was created by the Art Center's Board of Trustees and Dr. O. Allen Alpay in memory of his wife Beverly. A long time supporter of the arts, she served the Art Center as president and executive director. Dr Alpay continues to match all contributions to the fund.

Applications can be downloaded from the Art Center's website: www.pvartcenter.org. For more information or a mailed copy, call Kathy Shinkle at 310-541-2479.

2009–2010 ANNUAL FUND:

MAKE YOUR GIFT NOW!

The Palos Verdes Art Center's annual fund drive raises funds for general operations. Contributors can specify programs, such as exhibitions or education, which they wish their donations to support. This year's goal is again \$25,000.

Gifts are fully tax-deductible, although to be a deduction for 2009, the gift must be made by December 31, 2009. Gifts made after that date are deductible for 2010.

Contributions to the 2008 Annual Fund totaled \$24,572. Thank you to all the generous donors:

Nancy Backes
 Ronald R. Barnes
 Susan & Edward Carson Beall
 Andrea & Blake Brown
 Suad Cano
 Lisa Chin
 Fern & Martin Cohen
 Mark Comon
 Patricia Cox
 Mary Louise & Donald Crocker
 Ann & John Dempsay
 Loren & Craig DeRoy
 Lynn Doran
 Barbara & George Farinsky
 Gabrielle
 Christine & Thomas Gafford
 Jan & James Gardner
 Ghislaine & Dean Gargaro
 Charlotte & Allen Ginsburg
 Rosalind Halikis

Betty & Henry Halverson
 Betty & Dick Hampikian
 Velda & Norman Ishizaki
 Joanne & Ralph Iwens
 Patricia Geary Johnson
 Jeanne & Harry Keegan
 Yoshikazu & Satomi Kigoshi
 Maude & Aaron Landon
 Dorothy & Allen Lay
 Marilyn & Marvin Litvak
 Ruth & Richard Lohrer
 Laura Lee & Thomas Long
 Helen Mallet
 Mildred Marx
 Harumi & Hiroshi Matsuzaki
 Georgene McKim &
 James LaBarba
 Elaine Miller-David
 Chris Miloe
 Maureen & Stanley Moore

Frances Nebolon
 Grant Niman
 Harlyne J. Norris
 Henry Pearson
 Paula & Carl Perry
 Patricia & Frederick Pobanz
 Ione Ransom
 Marilyn & Howard* Russell
 Jane & Stephen Shutt
 Mary & Dale Spiegel, Jr.
 Angela & Todd Springer
 Barbara St. John
 Gay & John* Stodder
 Olivia Ward & Family
 Velma Winey
 Betty Wing
 Doris & Richard Wood
 Marilyn & Robert Yassin

**deceased*

Van Gogh Comes to the Palos Verdes Art Center

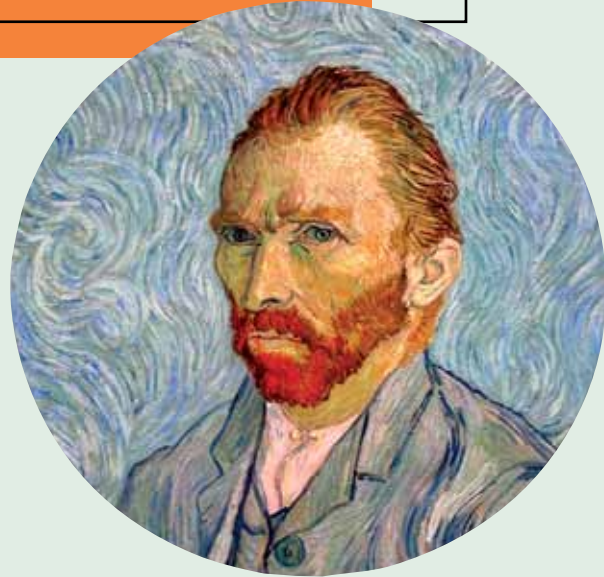
About van Gogh

MAY 7 – JULY 18, 2010

Few artists have the international reputation of Vincent van Gogh. His work is world famous for its striking beauty and the uniqueness of its very modern message. Few artists' lives have been as well documented as van Gogh's. Because of his many self-portraits, his face is instantly recognized. The depth of his passions touches us all, especially as they translate to his art, making it very difficult, if not impossible, to separate the creator from his work so that it can be assessed appropriately in the context of both what it is and the history of the art of the late 19th century.

Because he is so famous, van Gogh is also, perhaps, the first artist to become an official "brand," with his work and his person giving rise to a world-wide business of van Gogh things. From copies of his paintings to the use of his work and name on such diverse items as shoes, vodka, artist's colors and a host of so-called designer items, van Gogh continues to be a well-known brand.

About van Gogh will deal with van Gogh as both an artist and a person through display of art and art-related van Gogh items. In a series of didactic, interactive installations, the exhibition will focus on his achievement as an artist, how he came to be so famous and, as a result and with



appropriate examples, how the van Gogh brand still fills a mass market today, more than a century after his death.

The exhibition will also raise the question of what should be acceptable and appropriate use of an artist's creations after his death, and how art museums have profited—appropriately or inappropriately—from van Gogh branding. Even though van Gogh is very well-known, this doesn't mean he is fully or properly appreciated, a situation, which, it is hoped, this exhibition will remedy, while providing the opportunity to understand fully van Gogh's importance as an artist and why he still speaks to us today in such a commanding voice.

SAVE THE DATE

Mark your calendar and
plan to attend.

Homes Tour Extraordinaire

(sponsored by The Circle)

Friday and Saturday, April 16 and 17

Celebrate Chefs VI

(sponsored by The Associates)

Saturdays, July 17, 24 and 31

Palos Verdes Concours d'Elegance

Sunday, September 19

Teachers: This One's for You!

Art for Educators is back with a two-day March workshop to help teachers overcome their "fear of art" by mastering some simple art techniques.

The cure includes an introduction to a variety of art forms, including drawing, painting, printmaking, sculpture and ceramics. Through hands-on exercises, participants will learn to create art with their students, to develop a template for a visual arts lesson plan and to analyze works of art. They will also gain the confidence to incorporate art into their daily curriculum and earn an academic unit from Cal State, Dominguez Hills.

Artist and educator Karla Schmidt Commins will present the workshop from 8:30 a.m. – 4:30 p.m. Saturdays, March 13 and 20 at the Palos Verdes Art Center. The fee is \$90 (\$50 for Cal State, Dominguez Hills and \$40 for the Art Center).

Pre-registration is required. To register or more information, call Gail Phinney, education director, at 310-541-2479.

president's column

CONTINUED FROM PAGE 2

Why all this preamble? Very simply to let you know that the redevelopment of the Art Center is on track. When completed, it will be a very useful facility to the community and a credit to Palos Verdes. Why "Keep Your Powder Dry"? Because as soon as these final design details are completed, we will begin construction, and we will be coming to you seeking your participation in making this redevelopment of the Palos Verdes Art Center a reality.

So I am asking you to put us squarely in your giving plans for 2010 and KEEP YOUR POWDER DRY for the Art Center.

in the artists' studio:

Palos Verdes Art Center

Through January 6:
Jean Alexander (photography),
Holiday Tree, Group 3-D & Fibers.

January 7–February 2:
Julia Chu (watercolors), Jill
Kollmann (jewelry), Group 3-D.

February 3–March 3:
Jennifer Siegal (paintings),
Valentine 3-D & Jewelry.

March 4–April 7:
Suzanne Kuuskmae (watercolors),
Marilyn Harrison (jewelry),
Group 3-D.

Village Center

300C Deep Valley, Dr.,
Rolling Hills Estates
310-265-2592

Through January 4:
Art Is a Gift, All-member holiday
show.

January 5–February 13:
Mixed Media, Paul Conrad
(sculpture, books & drawings),
Anita Gerlach (oil paintings),
Linda Thompson (watercolors).
Reception: 1–4 p.m., Sunday,
January 10.

February 14–March 28:
Driven to Abstraction, Annie
Clavel, Dawn Quinones & Frances
Wang (abstract paintings), plus
silk clothing by Quinones and sil-
ver jewelry by Wang.

BOARD OF TRUSTEES

Donald Crocker, Chairman of the Board
Allen Lay, President
Loren DeRoy, President-Elect
Betty Wing, First Vice President
Nancy Cumming, Second Vice President
Grant Niman, Treasurer
Liz Fitzgerald, Secretary
Robert A. Yassin, Chief Executive Officer
& Executive Director

Janet Baszile	Georgene McKim
Edward Carson Beall	Julia Parton
Denise Guzman	Debbie Richardson
Maude Landon	Laura Salvay
Richard Lohrer	Jane Shutt
Marilyn Long	Mohini Syal

BOARD OF ADVISORS

Advisory Committee

Betty Wing, Chair
Pamela Anderson
Nancy Black
Virginia Butler
Nancy Comaford
Lisa Gentry
John Kaytor
Judy Krehbiel
Marcia Lamkins
Jan Napolitan
Debbie Richardson
Linda Roberts
Jane Shutt
Lynne Variano
Vickie Walker

Advisory Council

James Cheney, Chair
Susan Beall
Walter R. (Rod)
Burkley, Jr.
Myron A. (Mike)
Friedman
Jacqueline S. Marks
Jan Napolitan
Rod Peveler
Peter Phinney
Sharon Ryan
Robert B. Sheh
Tseng-Yao Sun

ENDOWMENT TRUSTEES

Richard Lohrer, Chair	George L. Romine
Myron A. (Mike) Friedman	Geoff Wainwright
Paul Nibarger	

HONORARY BOARD

Dr. O. Allen Alpay	Martha Norman
Dorothy Chacksfield Edinger	Harlyne J. Norris

STAFF

Robert A. Yassin, Chief Executive Officer

Oscar Aguilar, Facilities
Scott Cauty, Exhibitions Director
Becky DesRosiers, Membership Coordinator
Angela Hoffman, Education Coordinator
Bruce Milbury, Facilities
Gail Phinney, Education Director
Barbara Ruiz, Weekend Receptionist
Kathy Shinkle, Public Relations Director
Jeff Stellges, Raffle Manager/Facilities Coordinator
Jaffar Syed, Bookkeeper
Ann Willens, Administrative Director
Kathy Shinkle, *ARTifacts* Editor
Christine Barnicki, *ARTifacts* Designer

The Palos Verdes Art Center inspires individuals to celebrate, appreciate and create art.

get AIRBORNE!

Celebrate *Art on a String*, the Art Center's exhibition of world kites (January 29 – March 27) by building and flying your own kites and paper airplanes. Professor Madhu Thangavelu of USC Astronautics will teach you how in afternoon workshops on Sunday, February 7 and Monday, March 15. Call 310-541-2479 to register. (There are no member or early bird discounts on these workshops.)

GO (BUILD & FLY A KITE! (MAT-1) (Parent-Child Workshop)

Sunday, 2/7, 1–4pm \$25/ parent-child project
Some kites look good. Others fly good. Make a diamond kite that looks good and flies even better. Stretch and glue colorful material on a frame, create a nice bridle, add a crepe paper streamer tail and let it (and your soul!) soar.

PLANES, PLANES, PLANES (MAT-2)

Monday, 3/15, 3:30–5:30pm \$15/participant
Ever wonder how planes fly, and why? Learn to build a world class paper airplane that flies at least as good as it looks. Starting with a simple sheet of paper build a streamlined paper airplane step-by-step and fold-by-fold. Decorate it and send it aloft!



ART AT YOUR FINGERTIPS ENDED UP WITH THE MOST COLORFUL VOLVO AT THE 2009 PALOS VERDES CONCOURS D'ELEGANCE AFTER NUMEROUS CHILDREN INDULGED THEIR CREATIVE IMPULSES. SPECIAL THANKS TO PETER KJELBERG OF THE SWEDISH CAR CLINIC FOR LENDING HIS CAR AND AAYF CO-PRESIDENT JUDY KREHBIEL FOR ORGANIZING THE PROJECT.

AND, MANY, MANY THANKS TO THE CONCOURS D'ELEGANCE FOR ITS \$15,000 DONATION TO THE ART CENTER FROM THE DAY'S PROCEEDS.

HAPPY BIRTHDAY!

Throw your child or grandchild a very special birthday party at the Palos Verdes Art Center! Indulge their pirate, princess, artist or fairy fantasies.

Each unique three-hour party is customized to entertain both boys and girls. The basic package includes age-appropriate art projects (select from several options); fantasy play in colorful costumes with a mural to set the stage; face painting; gallery tours; treasure hunts; balloons, and food, beverages and paper goods. Artist and party coordinator Ami Albea and her enthusiastic costumed assistants lead the fun.

Meanwhile, parents and their guests can relax on the Art Center patio and tour the galleries.

The price is \$475 for 10 children (\$425 for Art Center members) and \$25 for each additional child. For complete information, visit www.pvartcenterparties.org or call 310-541-2479, ext. 314.

thank you

- **The Circle** and its many, many talented volunteers—led by co-chairs **Cheryl Hellberg** and **Nancy Collinge** and “kitchen mothers” **Nancy Crawford** and **Liz Fitzgerald**—for hosting a terrific reception for the *Surf and Turf* opening and the Holiday Art Mart. Special thanks, too, to **Donna Duperon** for the decorations and **Deedee Rehtin** for all her assistance.
- **PVAC Artists**, led by **Jan Napolitan**, for getting the holiday shopping season off to a profitable start with the Holiday Art Mart.
- **Exhibitions Committee** for making the delicious soup for the Soup Supper and ceramists **Jane Aucreman**, **Lori Branstetter**, **Jim Cardillo**, **Marlene DeLugish**, **Karen Gale**, **Roy Kunisaki**, **Jan**

Napolitan, **John Nelson**, **Noriko Sperry**, **Jeff Stellges** and **Ruth Wilhelm** for fashioning the beautiful handmade bowls.

- **Allen Alpay** for opening his home for both The Associates new member reception and the Art Patrons holiday party.

- **Edward J. Hummel, Jr.**, for donating various art materials.

- **The Associates** for decorating the Art Center for the holidays. The elves who did the actual work were **Carolyn**, **Peter**, **Mark**, **Kevin** and **Susan Henschel**, **Lynne** and **Don Variano**, **Gayle Barney** and **Deanna-Marie Smith**.

calendar

DECEMBER

- 16 Peninsula Artists, 10 a.m.
- 19 Win Your Dream House Raffle Early Bird I deadline, 4 p.m. (see page 3)
- 21–24 Holiday Gift-Making Art Camp, 9 a.m.–noon
- 22 Dream House Raffle Early Bird I drawing, 5:30 p.m. (see page 3)
- 25 CHRISTMAS
- 28–31 New Year’s Art Camp, 9 a.m.–noon



JANUARY

- 1 HAPPY NEW YEAR
- 5 Docent Council, 9:30 a.m.
- 6 Art at Your Fingertips Workshop A, 8:45 a.m.
- 11 Winter classes begin. Term runs through March 20.
- 11 PVAC Artists, 9:30 a.m.
- 13 Art at Your Fingertips Workshop B, 8:45 a.m.
- 14–15 Peninsula Artists, 9 a.m.
- 23 Win Your Dream House Raffle Early Bird II deadline, 4 p.m. (see page 3)
- 26 Dream House Raffle Early Bird II drawing, 5:30 p.m. (see page 3)
- 27 The Circle, 9:30 a.m.
- 27 PADA, 6:30 p.m.
- 28 The Associates, 6:30 p.m.
- 29 *Art on a String* and *On Time: NY to LA* opening reception, 5–8 p.m. (see pages 6 & 7). Exhibitions run through March 27.

Cash Adams by The Circle, Mildred Marx. **Enid Coors** by The Circle, The DiBernardo Family, Krista M. Fuller, Maude & Aaron Landon, Jane Shutt, Barbara H. Stevens. **Cynthia Schrier** by Docent Council. **Charles Wallace** by Deedee Rehtin.

on the road with PVAC artists:

Elizabeth Lanzer received honorable mention in graphic arts at the 76th annual *International Exhibition of Fine Art in Miniature* at the Mansion at Stratford in Rockville, Maryland. The exhibition, sponsored by the Miniature Painters, Sculptors and Gravers Society of Washington, D.C, continues through January 2.

Lore Burger has handmade paper works in two shows: *Make an Impression* at Georgia Tech's Neely Gallery in Atlanta through January 4 and *The World of Paper* at the Indianapolis Marion County Central Library through January 10.

Through January 3, the gallery at The Norris Center for Performing Arts is displaying landscapes and portraits by **Ann Turner**. From January 4 – March 1, paintings of nature by Joy Gonzalez will be featured.

Steve Grey, who teaches digital arts, received the Grand Canyon Reader Award for his book *There Was a Coyote Who Swallowed a Fly*. First-graders throughout Arizona selected the winner from 10 finalists.

Portraits and landscapes by **Aapo Pukk** are on display in the Malaga Cove Library Art Gallery through January 8.

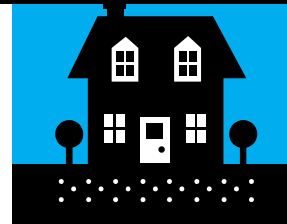
Susan McGehee's woven wire sculptures are included in *Fiber 2010*, an exhibition of contemporary fiber art, at La Sierra University's Brandstater Gallery, Riverside.

ARTISTS: The next deadline is February 15. This will be for any awards and for exhibitions between April and June 2010. Please contact Kathy Shinkle, 310-541-2479 or kshinkle@pvartcenter.org.



FEBRUARY

- 2 Docent Council, 9:30 a.m.
- 3 Art at Your Fingertips Workshop A, 8:45 a.m.
- 7 Kite Workshop, 1 p.m. (see page 13)
- 9 Paletteers, 10 a.m.
- 10 Art at Your Fingertips Workshop B, 8:45 a.m.
- 11 Peninsula Artists, 9 a.m.
- 20 Win Your Dream House Raffle Early Bird III deadline, 4 p.m. (see page 3)
- 23 Peninsula Artists, 9 a.m.
- 23 Dream House Raffle Early Bird III drawing, 5:30 p.m. (see page 3)
- 24 PADA, 6:30 p.m.
- 25 The Associates, 6:30 p.m.



MARCH

- 2 Docent Council, 9:30 a.m.
- 3 Art at Your Fingertips Workshop A, 8:45 a.m.
- 9 Paletteers, 10 a.m.
- 10 Art at Your Fingertips Workshop B, 8:45 a.m.
- 11 Peninsula Artists, 9 a.m.
- 13 & 20 Art for Educators, 8:30 a.m. (see page 12)
- 15 Paper Airplane Workshop, 3:30 p.m. (see page 13)
- 17 The Circle, 9:30 a.m.
- 20 Win Your Dream House Raffle Early Bird IV deadline, 4 p.m. (see page 3)
- 23 Dream House Raffle Early Bird IV drawing, 5:30 p.m. (see page 3)
- 24 PADA, 6:30 p.m.
- 25 The Associates, 6:30 p.m.



PALOS VERDES ART CENTER

5504 W. Crestridge Road
Rancho Palos Verdes
CA 90275

Non-profit
U.S. Postage Paid
Permit #356
Palos Verdes Peninsula,
CA 90274



GALLERY HOURS

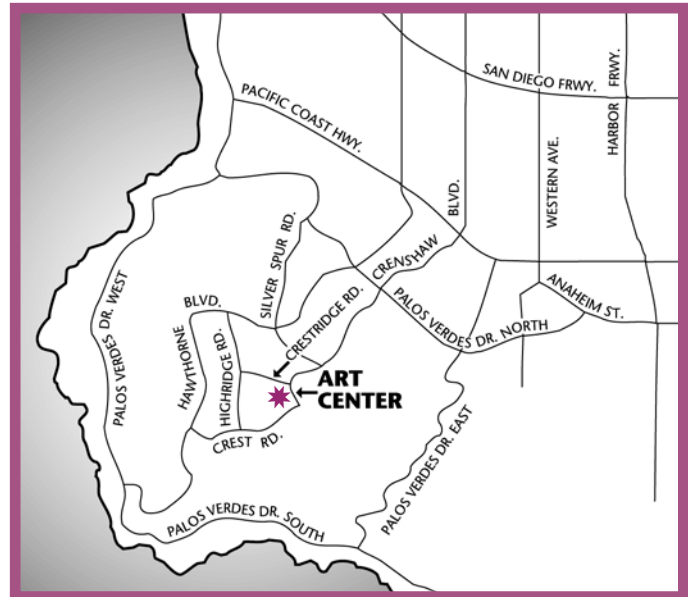
Beckstrand Gallery
Norris Gallery
Walker Gallery
Monday–Saturday: 10 A.M.–4 P.M.
Sunday: 1–4 P.M.

The Artists' Studio Gallery
Palos Verdes Art Center
Monday–Friday: 10 A.M.–5 P.M.
Saturday: 10 A.M.–5 P.M.
Sunday: 1–4 P.M.

The Village
Monday–Saturday: 11 A.M.–6 P.M.
Sunday: Noon–6 P.M.

OFFICE HOURS

Monday - Friday: 9 A.M.–5 P.M.
Saturday: 10 A.M.–4 P.M.
Sunday: 1–4 P.M.



tel: 310-541-2479 fax: 310-541-9520

www.pvartcenter.org E-Mail: info@pvartcenter.org